

# TOP RAIL



**20**  
KG/M

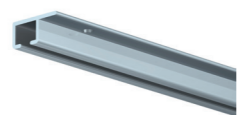
**10**  
YEAR  
WARRANTY

8 SCREWS / M

The flexible picture hanging system Top Rail is mounted to the ceiling. This ceiling rail that is discreet in its dimensions is an ideal hanging system to use in combination with recessed ceilings. By mounting the ceiling rail to the wooden side strip of a recessed ceiling, the rail 'disappears' into the ceiling. This 'invisible' picture hanging system then offers a flexible way to hang, change and replace pictures and wall decorations throughout the entire room.



## RAIL



TOP RAIL - WHITE RAL 9003

TOP RAIL - ALU ANODISED

TOP RAIL - BLACK ANODISED

|                    | TOP RAIL - WHITE RAL 9003 |                    | TOP RAIL - ALU ANODISED | TOP RAIL - BLACK ANODISED |        |                    |  |
|--------------------|---------------------------|--------------------|-------------------------|---------------------------|--------|--------------------|--|
|                    | P/1*                      | P/10*              | P/10*                   | P/1*                      | P/10*  |                    |  |
| ARTICLE NO. 200 cm | 9.4309                    | 9.4326             | 9.4313                  | 9.4378                    | 9.4323 |                    |  |
| ARTICLE NO. 300 cm | 9.4310                    | 9.4327             | 9.4314                  | 9.4379                    | 9.4324 |                    |  |
| ARTICLE NO. 600 cm | -                         | 9.4362             | -                       | -                         | 9.4367 |                    |  |
|                    |                           | FASTENER KIT WHITE |                         | FASTENER KIT GREY         |        | FASTENER KIT BLACK |  |
| ARTICLE NO. 200 cm | 4070                      |                    | 4069                    |                           | 4068   |                    |  |
| ARTICLE NO. 300 cm | 4077                      |                    | 4076                    |                           | 4075   |                    |  |



## CONTENT FASTENER KIT



|        | QUANTITY 200 cm | QUANTITY 300 cm |  |       |     |
|--------|-----------------|-----------------|--|-------|-----|
|        |                 |                 | 9.4912 (WHITE) / 9.4913 (ALU) / 9.4903 (BLACK) | SCREW | 16x |
| 9.4900 | 16x             | 24x             | PLUG 4 mm                                      | 16x   | 24x |
| 2390   | 1x              | 1x              | INSTRUCTION                                    | 1x    | 1x  |

ALL MOUNTING MATERIALS MAY BE ORDERED SEPARATELY. SEE PAGE 38 - 8 SCREWS /m  
\* P/1 PACKAGED BY THE PIECE IN FOIL / P/10 PACKAGED PER 10 IN FOIL