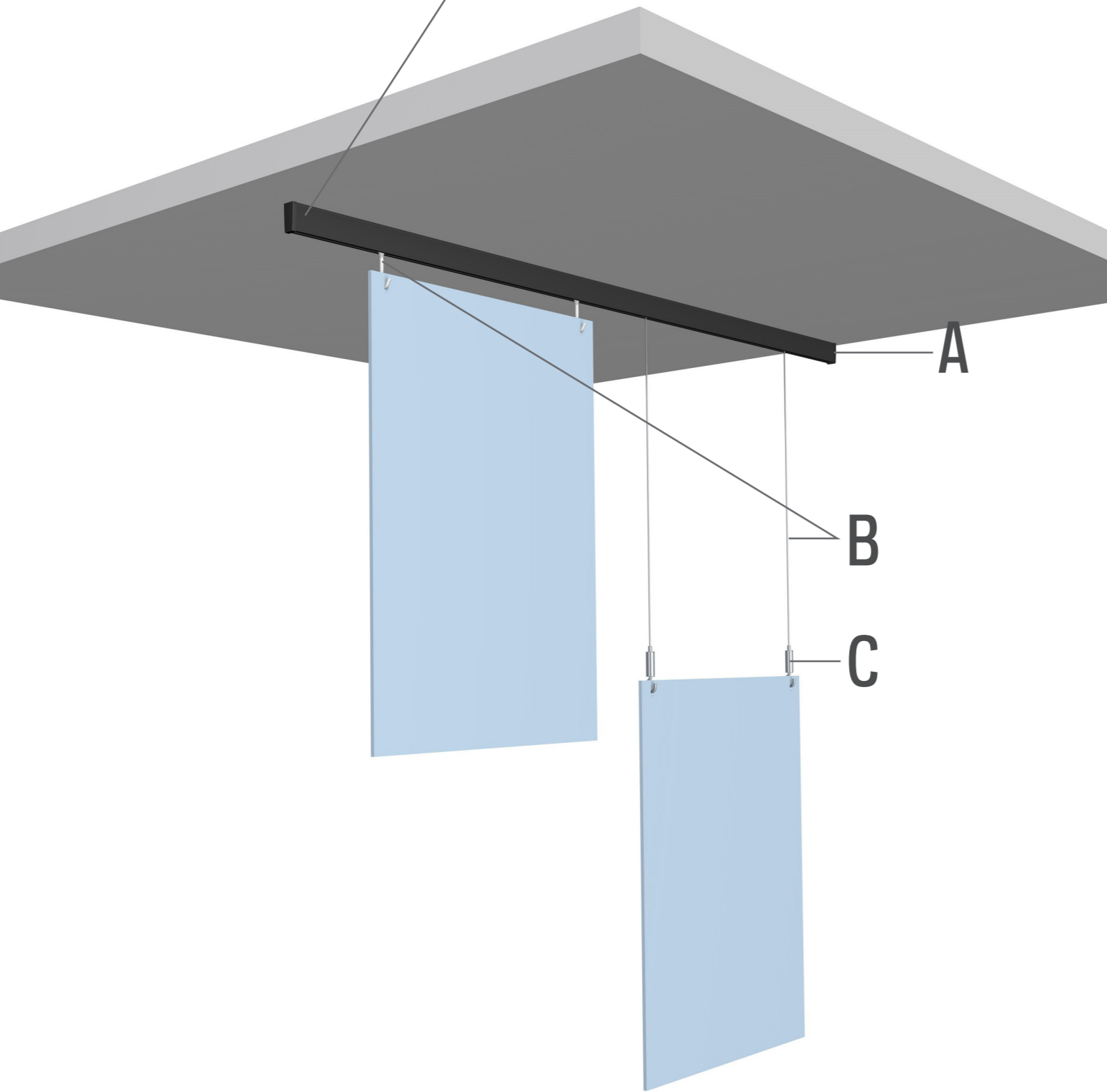
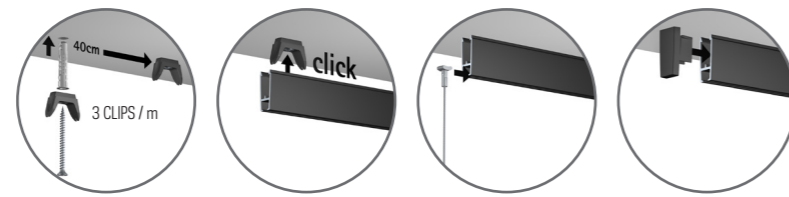


# XPO RAIL



**COMBINATION SHOWN:**  
A + B3  
A + B1 + C3

**POSSIBLE COMBINATIONS:**  
A + B1/B2 + C1/C2/C3/C4/C5  
A + B3

# XPO RAIL

A						
				<b>20</b>	KG/M	
XPO RAIL 200 cm BLACK	XPO RAIL 200 cm WHITE PRIMER	XPO RAIL 200 cm ALU BRUSHED				
05.15201	05.15200	05.15202				
A						
END CAP XPO RAIL BLACK	END CAP XPO RAIL WHITE	CLIP CLICK&CONNECT XPO RAIL	PLUG (Ø 5 mm)	SCREW	FASTENER KIT XPO RAIL WHITE 200 CM	FASTENER KIT XPO RAIL BLACK/ALU 200 CM
05.15030	05.15020	05.15010	9.4929	9.4931	5092	5093
B1		B2		B3		
STEELWIRE + SLIDER 1,2 mm 200 cm BLACK	STEELWIRE + SLIDER 1,2 mm 200 cm NICKEL	TWISTER HOOK				
7807.200	7807.210	9.4510				
C1		C2		C3		
STEELWIRE HOOK AUTO GRIP 1,2 mm ST01BL	STEELWIRE HOOK AUTO GRIP 1,2 mm ST01NI	STEELWIRE HOOK AUTO GRIP 1,2 mm ST02NI	STEELWIRE HOOK AUTO GRIP 1,2 mm ST03NI	STEELWIRE HOOK AUTO GRIP 1,2 mm ST03NI	STEELWIRE CLAMPHOOK AUTO GRIP 1,2 mm STC01NI	STEELWIRE CLAMPHOOK AUTO GRIP 1,2 mm STC01NI
7807.010	7807.020	7807.030	7807.040	7807.040	7807.050	7807.050

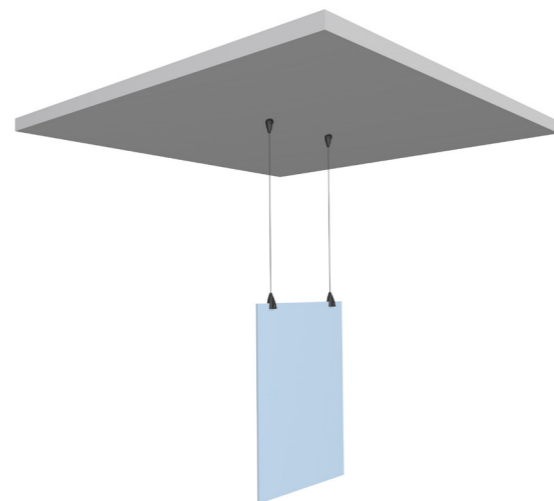
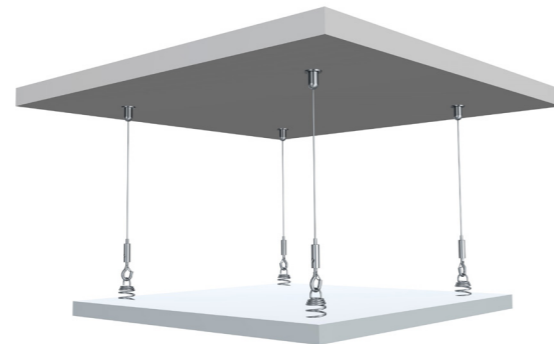
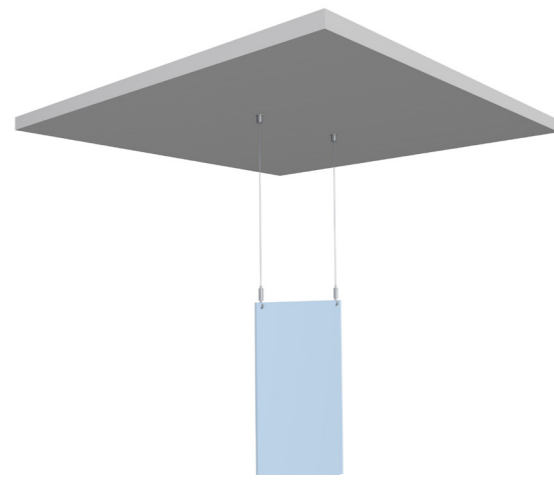
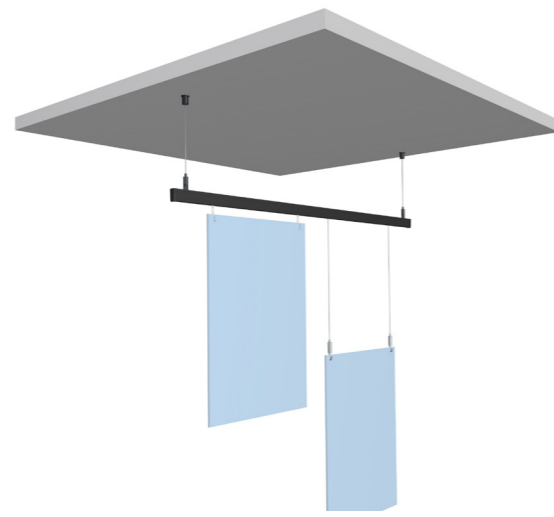
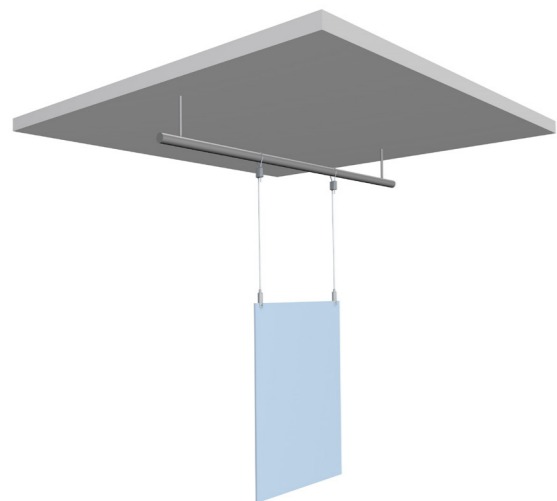
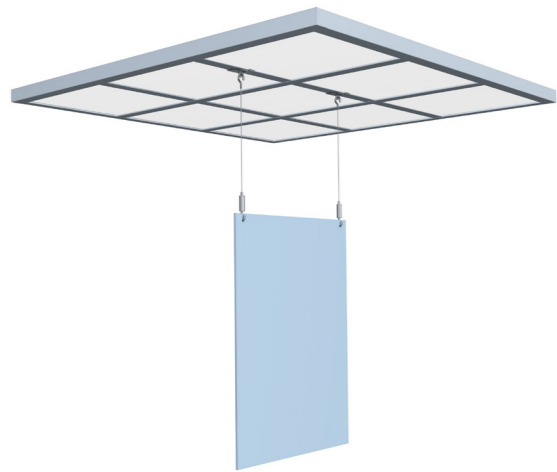
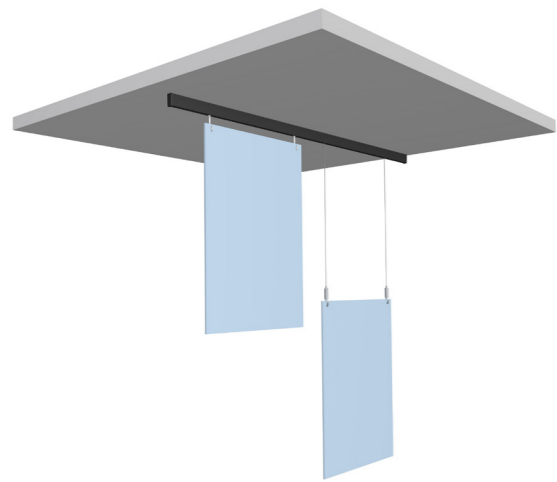
C				
STEELWIRE HOOK AUTO GRIP 1,2 mm ST01BL	STEELWIRE HOOK AUTO GRIP 1,2 mm ST01NI	STEELWIRE HOOK AUTO GRIP 1,2 mm ST02NI	STEELWIRE HOOK AUTO GRIP 1,2 mm ST03NI	STEELWIRE CLAMPHOOK AUTO GRIP 1,2 mm STC01NI
7807.010	7807.020	7807.030	7807.040	7807.050

* CONTENT FASTENER KIT			
			AANTAL 200 cm
	05.15010	CLIP XPO RAIL	6x
	9.4931	PLUG FISCHER 5 mm	6x
	9.4929	SCREW FOR PLUG FISCHER 5 mm	6x
	05.15020 / 05.15030	END CAP XPO RAIL WHITE / BLACK	2x
	2639	INSTRUCTION	1x



installation video

# SIGN HANGING SYSTEMS



Artiteq has selected the Fischer UX 5x30 R plug to be used in combination with its hanging systems. The Fischer UX 5x30 R plug can be used in different kinds of materials, such as concrete, stone and plasterboard. Depending on the material, the plug can support a maximum load of 30 kg. The drill used with the plug must have a diameter of 5 mm. The plug is 30 mm in length. The screw used with the plug is 38 mm long and has a diameter of 3.5 mm (to be used in combination with a PZ2 bit).

To determine the maximum load of a signing hanging system, it must be known what type of mounting materials will be used and what surface (i.e. type of material) these will be attached to. The components of the signing hanging system all have a maximum bearing capacity. This is the maximum bearing capacity for the component itself and not the maximum bearing capacity that must be taken into account for the system as a whole. For the whole system, the load capacity that is recommended for the mounting material in combination with the respective base material, takes precedence.

For every signing hanging system, the weight that you wish to hang must be balanced against the maximum load capacity of the mounting material. If systems are hung from other hanging components, such as recessed ceilings, you have to know the maximum load of this hanging component before fitting our systems. The tables below show the maximum load capacity for the Fischer plug in combination with different materials and the maximum bearing capacity for each component for the different signing hanging systems.

TYPE	UX 5X 30		
<b>RECOMMENDED LOADS IN THE RESPECTIVE BASE MATERIAL <math>F_{REC}^{2)}</math></b>			
Concrete	$\geq$ C20/25	[kN]	0,30
Solid brick	$\geq$ Mz 12	[kN]	0,20
Perforated sand-lime brick	$\geq$ KSL 12	[kN]	0,30
Vertically perforated brick	$\geq$ Hlz 12	[kN]	0,20
Aerated concrete	$\geq$ AAC 4	[kN]	0,15
Gypsum plasterboard	12,5 mm	[kN]	0,10
Gypsum plasterboard	25 mm	[kN]	0,10
Gypsum fibreboard	(Fermacell)	[kN]	0,20
Gypsum block	$\rho \geq 0,9 \text{ kg/dm}^3$	[kN]	-

ART. NO.	DESCRIPTION	MAX. LOAD CAPACITY
7807.060	Suspension bracket Xpo Rail 1,2 mm	15 kg
7807.200	Steelwire + slider 1,2 mm 200 cm black	15 kg
7807.210	Steelwire + slider 1,2 mm 200 cm nickel	15 kg
7807.100	Ceiling Bracket black C01BL	15 kg
7807.110	Ceiling Bracket nickel C01NI	15 kg
7807.140	Ceiling Suspension auto grip 1,2 mm CS01NI	15 kg
7807.350	Steelwire 7x7 1,2 mm 10 m	15 kg
7805.052	Loop Hanger 1,0 mm - 1,5mm	10 kg
7807.120	Recessed Ceiling Clip 20 mm	5 kg
7807.130	Recessed Ceiling Clip 20 mm + suspension auto grip 1,2 mm	5 kg
7807.310	Steelwire + hook 1,2 mm 300 cm	15 kg
7807.010	Steelwire Hook auto grip 1,2 mm ST01BL	15 kg
7807.020	Steelwire Hook auto grip 1,2 mm ST01NI	15 kg
7807.030	Steelwire Hook auto grip 1,2 mm ST02NI	15 kg
7807.040	Steelwire Hook auto grip 1,2 mm ST03NI	15 kg
7807.400	Acoustic Spring 01-NI	5 kg
7807.050	Steelwire Clamphook auto grip 1,2 mm STC01NI	15 kg



1 Required safety factors are considered.  
2 Valid for tensile load, shear load and oblique load under any angle