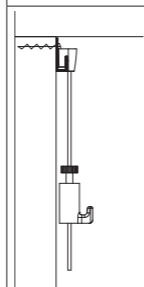
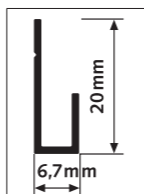


# CLASSIC RAIL



**20**  
KG/M

**10**  
YEAR  
WARRANTY



4 SCREWS/ M

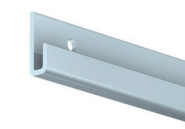
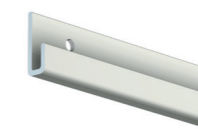
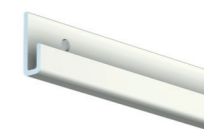
## Change pictures quickly and easily with Classic Rail

The Classic Rail is a wall rail that is often used in galleries and at exhibitions. This hanging system has an open J-shape which, with the aid of rods and sliding springs, makes it easy to hang pictures and other wall decorations. If you are looking for a discreet alternative to a rod, it is possible to use a cylinder hook with a transparent perlon cord in the rail. Depending on the weight of the picture or wall decoration, various hooks may be slid onto the perlon hanging wire.

## A hanging rail for a contemporary interior

The Classic Rail is a J-shaped, open rail system with a modern look. This picture hanging system is available in white or aluminium. The rods that may be placed in the rail vary in thickness from 2 to 3 mm, and have a maximum load capacity of 20 kg. Available in white or steel, the rods use various sliding springs.

## RAIL



	CLASSIC RAIL - WHITE RAL 9010		CLASSIC RAIL - WHITE PRIMER RAL 9016		CLASSIC RAIL - ALU	
	P/1*	P/20*	P/1*	P/20*	P/1*	P/20*
ARTICLE NO. 200 cm	9.4307	9.4357	-	9.4390	9.4305	-
ARTICLE NO. 300 cm	9.4308	9.4358	-	9.4391	9.4306	-
	FASTENER KIT WHITE		FASTENER KIT WHITE		FASTENER KIT GREY	
ARTICLE NO. 200 cm	4072		4072		4071	
ARTICLE NO. 300 cm	4079		4079		4078	



installation video

## CONTENT FASTENER KIT



			QUANTITY 200 cm	QUANTITY 300 cm
9.4901 (WHITE) / 9.4902 (GREY)	SCREW		8x	12x
9.4931	PLUG		8x	12x
2389	INSTRUCTION		1x	1x

ALL MOUNTING MATERIAL MAY BE ORDERED SEPARATELY. SEE OVERVIEW ON PAGE 38  
\* P/1 PACKAGED BY THE PIECE IN FOIL / P/20 PACKAGED PER 20 IN FOIL

## RODS



	ROD WHITE STEEL 2 mm MAX. 20 kg	ROD WHITE STEEL 3 mm MAX. 20 kg	ROD STEEL 3 mm MAX. 20 kg
ARTICLE NO. 100 cm	9.4216*	9.4161	9.4151
ARTICLE NO. 150 cm	-	9.4162	9.4152
ARTICLE NO. 200 cm	9.4217*	9.4163	9.4153
ARTICLE NO. 300 cm	-	9.4165	9.4155

\*COMPATIBLE WITH HOOKS 9.4207, 9.4261, 3041200/50 - SEE PAGE 58

## SLIDING SPRINGS



	SLIDING SPRING STAINLESS STEEL 3 mm MAX. 20 kg	SLIDING SPRING STAINLESS STEEL + LIP 3 mm MAX. 10 kg
	9.4170	9.4171

## CYLINDER HOOKS



	CYLINDER HOOK WHITE MAX. 15 kg	CYLINDER HOOK ALU MAX. 15 kg
	9.4237	9.4244

\* FOR USE WITH HANGING WIRE PERLON + SLIDER

## WIRES



	PERLON + SLIDER 2 mm MAX. 15 kg
ARTICLE NO. 100 cm	9.4424
ARTICLE NO. 150 cm	9.4425
ARTICLE NO. 200 cm	9.4426
ARTICLE NO. 250 cm	9.4427
ARTICLE NO. 300 cm	9.4428



MICRO GRIP 2 mm  
30.41200 | 20 kg



MICRO GRIP LOCK 2 mm  
30.41250 | 20 kg

FOR MORE PICTURE HOOKS SEE PAGE 58